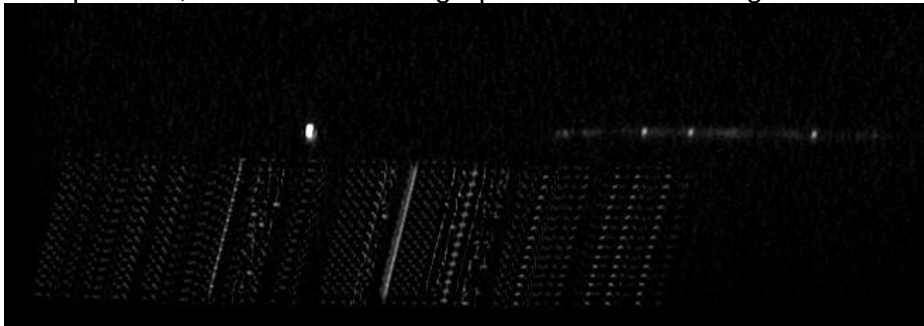


Lyriden Spektren, erste Resultate mit 600L/mm Gitter

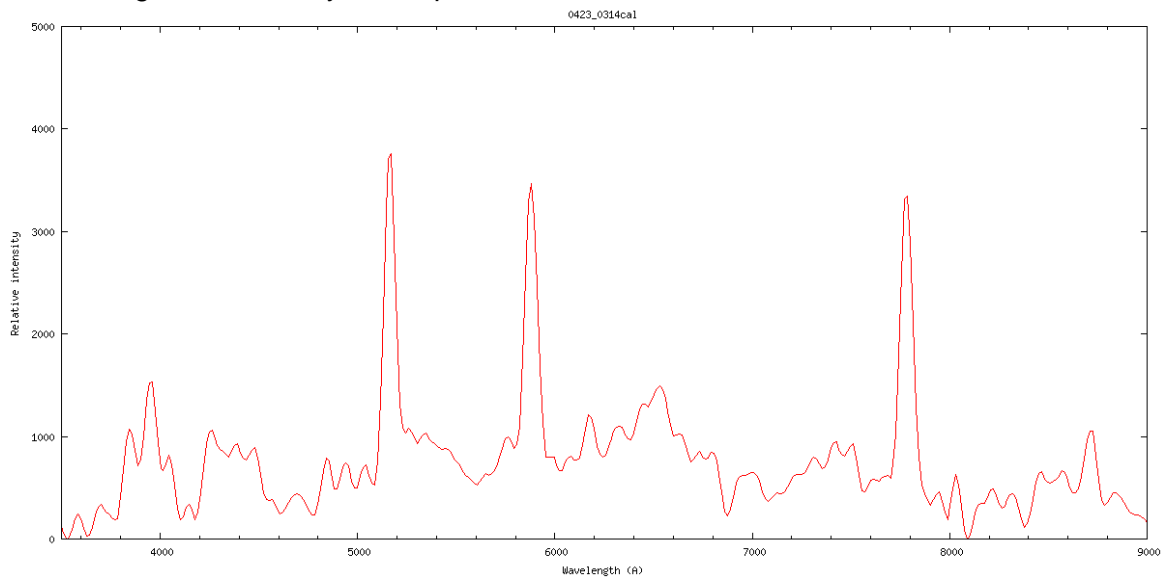
M20150423_031405_MAI2, Lyrid, -3m



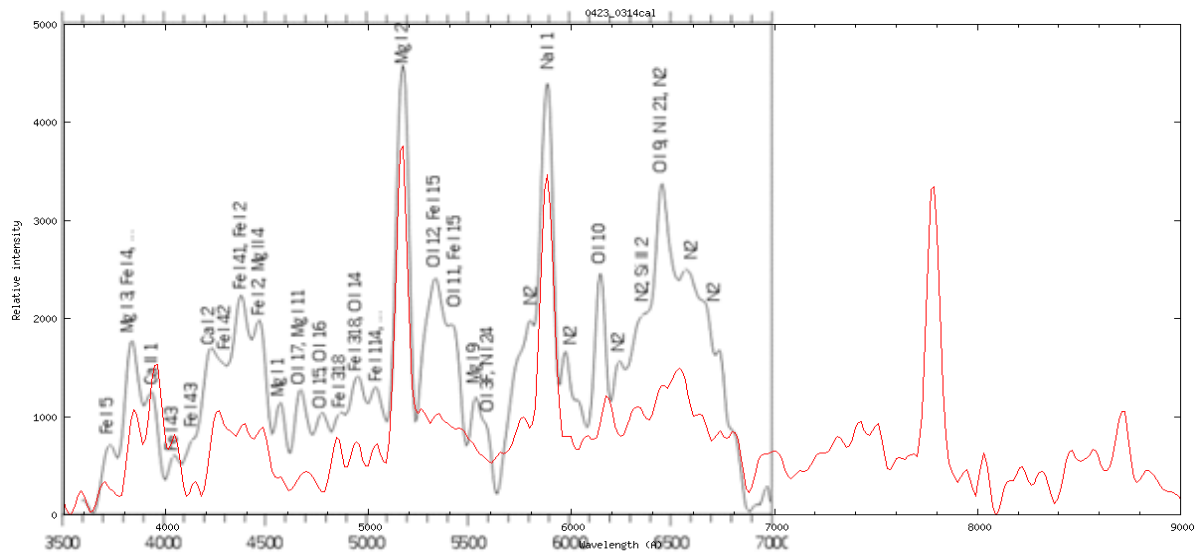
Rohspektrum, nach Linearisierung Spektrum und Stacking:



Wellenlängenkalibriert, Lyriden Spektrum



zum Vergleich, mit Linienzuordnungen, Leonidenspektrum von E.P. Maiden, <http://members.shaw.ca/epmaiden/>

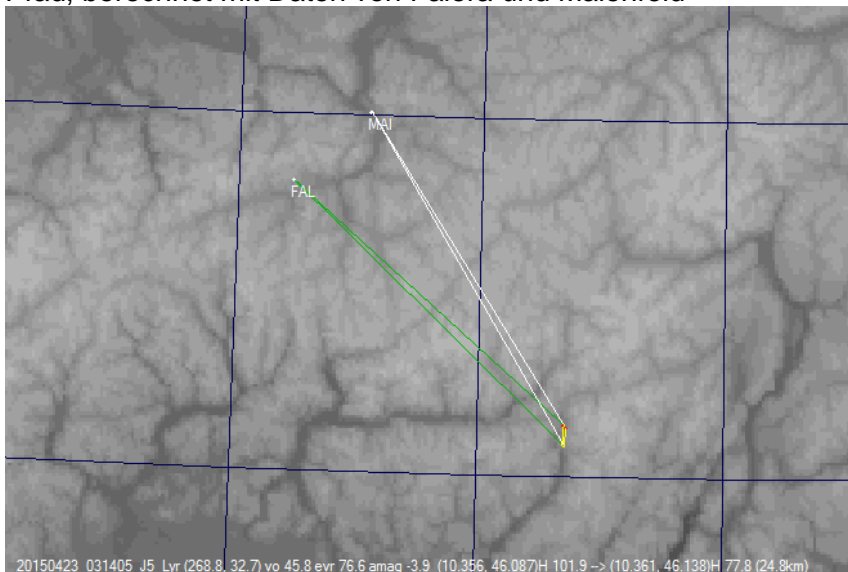


Ab 8000Å enthält Spektrum möglicherweise Beiträge der 2. Ordnung

Rohspektrum der Referenz:



Pfad, berechnet mit Daten von Falera und Maiefeld



M20150423_230213

Lyrid, -4.6m, 1.2 sec, MAI1

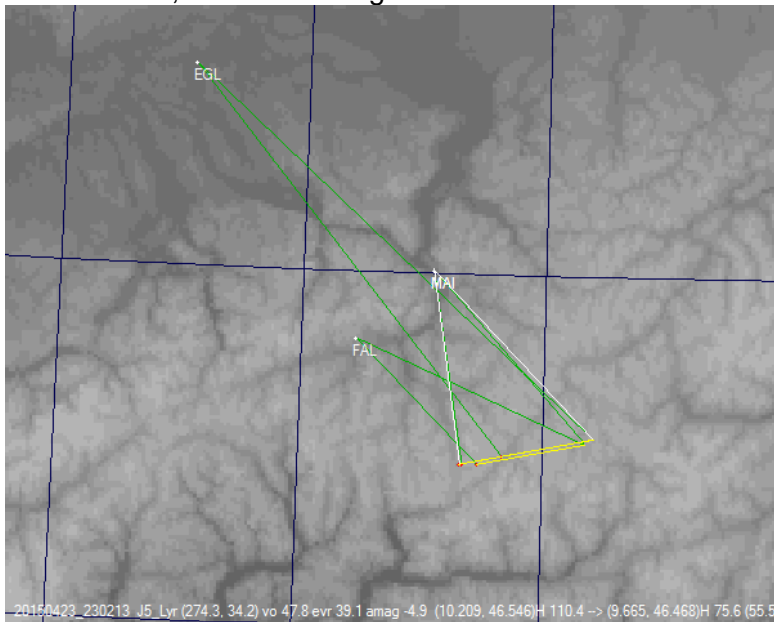
Lyrid, -4.2m, 1.1 sec, MAI2

Screenshot UFO Analyzer:

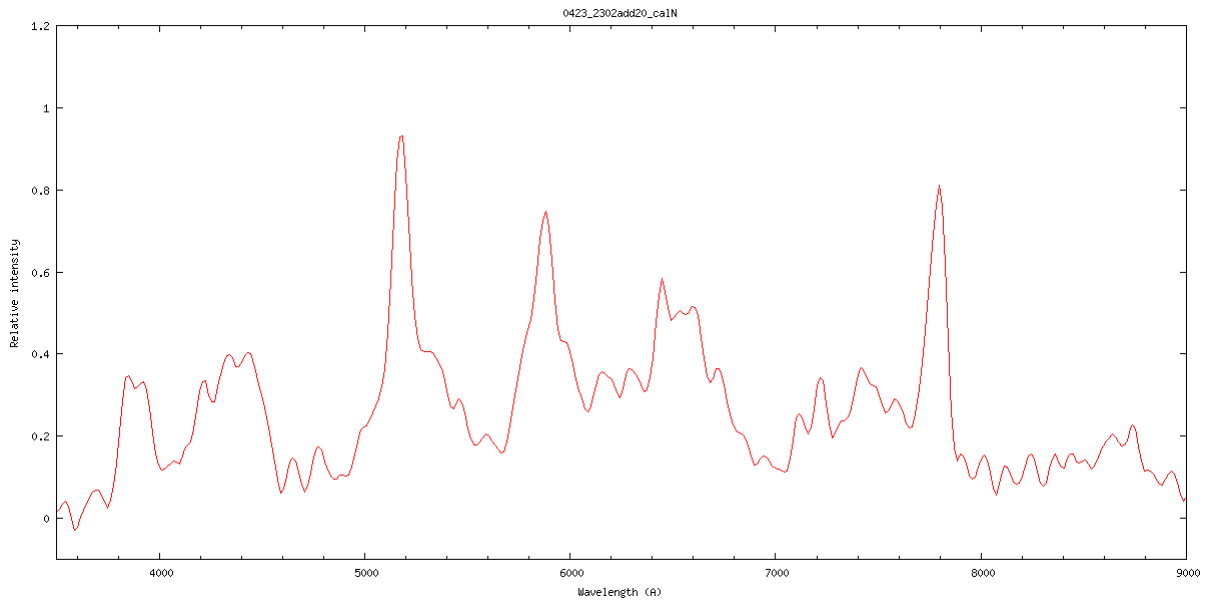
The screenshot shows the UFO Analyzer software interface. The main window displays a meteor trail against a dark background. The interface includes several panels and controls:

- Top Panel:** Contains menu options like 'Main', 'Profile/Analyze', 'Class', 'Plot', and 'Uly'. It also has 'View' options for 'Mask Editor', 'Trail Map', and 'Ground Map'.
- Left Panel:** Contains various input fields and checkboxes for parameters such as 'lid', 'can', 'lens', 'cap', 'tme', 'fov', 'k4', 'k3', 'k2', 'dx', 'dy', 'dz', 'ev', 'az', 'ad', 'pos', 'mag', 'analyze', and 'retry'.
- Right Panel:** Displays a table with columns 'class', 'm', 'sec', 'mag', 'cdeg', 'Vo', 'av', and 'pbx'. It also shows a table with columns 'clip_name', 'o', 'class', 'mag', and 'sec'.
- Bottom Panel:** Shows a table with columns 'clip_name', 'o', 'class', 'mag', and 'sec'. The data includes entries like 'M20150423_230000_MAI=2', 'M20150423_230213_MAI_2', 'M20150424_000000_MAI=2', 'M20150424_010000_MAI=2', 'M20150424_011232_MAI_2', 'M20150424_020000_MAI=2', and 'M20150424_030000_MAI=2'.

Ground Path, 3 Beobachtungsstationen



Spektrum kalibriert, nach Addition von 20 Teilspektren, aus deinterlaced Halbbildern (erste 0.4 sec des Meteors, nachher Spektrum überbelichtet und teilweise ausserhalb des Bildes):



Vergleich mit Referenz Leonidenspektrum (E.P.Majden, siehe oben):

